



The Spinney
Bestwood Village, Nottingham NG6
etc
Guide Price £310,000 Freehold

A UNIQUE THREE BEDROOM SEMI
DETACHED HOME FOR SALE IN
BESTWOOD VILLAGE, NOTTINGHAM!



GUIDE PRICE £310,000 - £320,000

Step into this charming and unique three-bedroom semi-detached home, which, from the outside, may look like a typical house but reveals delightful surprises as you enter. Inside, you'll discover a cosy blend of rustic charm with cottage-style features that will immediately make you feel at home.

Upon entering the front door, you're greeted by a warm and inviting atmosphere, with beautifully crafted wooden features throughout. The spacious lounge boasts an open fire, creating a perfect spot to unwind, with doors leading into a bright and airy conservatory that brings the outside in.

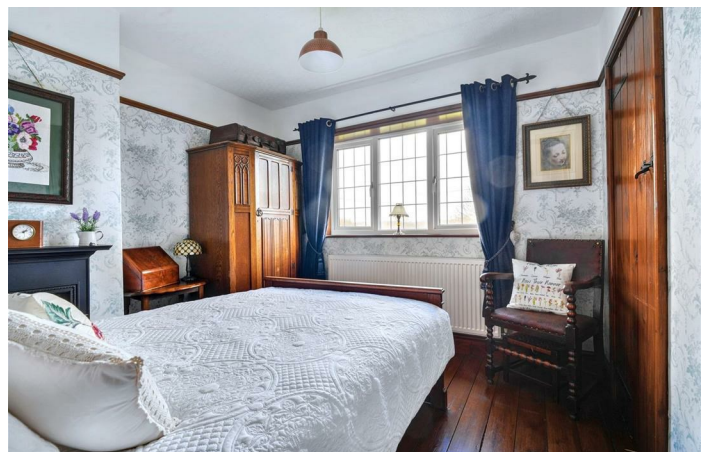
The kitchen/diner is truly one of a kind, offering a space that's perfect for family meals and entertaining. It comes equipped with a high-end Rangemaster cooker, and a log burner adds an extra touch of warmth and character. A pantry and utility room provide ample storage, and a separate door from the kitchen leads directly into the conservatory, perfect for dining or relaxation. Additionally, there is a convenient downstairs shower room for added practicality.

Upstairs, the property offers three well-proportioned bedrooms, each filled with natural light, as well as a traditional family bathroom featuring a beautiful freestanding bath – a perfect spot for a soak after a long day.

The home is set on a large plot with ample outdoor space to enjoy. The front of the property boasts a driveway for two cars, with the potential for more if the fencing is removed. The large front lawn is split into two sections, with mature trees adding character and privacy. To the rear, you'll find a garage, a summer house, and a spacious lawn area. There's also a tarmac area with potential for additional parking, making this home even more versatile.

This property combines traditional charm with modern convenience, and it's an absolute must-see for anyone looking for a unique and spacious family home. Don't miss out on the opportunity to make it yours!

PLEASE NOTE: A single storey annex to existing dwelling was accepted for planning in 2018, see below:
<https://pawam.gedling.gov.uk/online-applications/applicationDetails.do?activeTab=summary&keyVal=P3BFKGHLI9400>



Front of Property

To the front of the property there is a driveway providing off the road parking for up to two cars, two large lawned area incorporating a range of mature trees and shrubbery throughout, hedging and fencing to the borders, pathway leading to the front entrance door.

Bedroom One

12'4" x 8'11" approx (3.78 x 2.73 approx)

Wooden flooring, double glazed window to the front elevation, wall mounted radiator, picture rail.

Bedroom Two

10'0" x 9'5" approx (3.06 x 2.89 approx)

